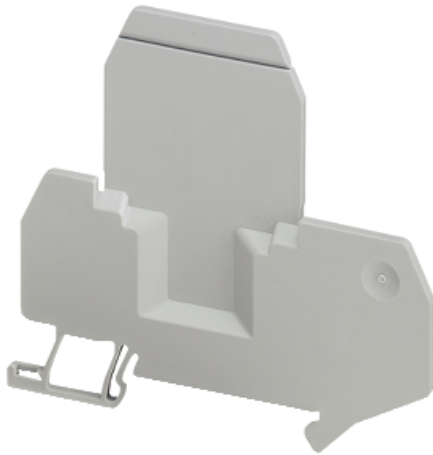


Product availability : Stock - Normally stocked in distribution facility



### Main

Range	Linery
Product name	Linery TR
Product or component type	Partition
Device short name	TRA
Accessory / separate part category	Insulation accessory
Product compatibility	TRV screw terminal terminal block
Thickness	0.08 in (2 mm)

### Complementary

Cable cross section	0.01 in <sup>2</sup> (4 mm <sup>2</sup> ) 0.00 in <sup>2</sup> (2.5 mm <sup>2</sup> )
Number of connections	2
Number of measurement input	2 4
Quantity per set	Set of 50
Net Weight	0.28 oz (8 g)
Color	Gray

### Ordering and shipping details

Category	21715 - IEC TERMINAL BLOCKS-NSY,AM1,DF6,GK1
Discount Schedule	CP5
GTIN	00785901965077
Package weight(Lbs)	0.01 lb(US) (0.00 kg)
Returnability	Yes
Country of origin	DE

\* Price is "List Price" and may be subject to a trade discount – check with your local distributor or retailer for actual price.

## Packing Units

Package 2 Weight	14.18 oz (402 g)
Package 3 Weight	6.06 lb(US) (2.75 kg)

## Offer Sustainability

Sustainable offer status	Green Premium product
REACH Regulation	<a href="#">REACH Declaration</a>
REACH free of SVHC	Yes
EU RoHS Directive	Pro-active compliance (Product out of EU RoHS legal scope) <a href="#">EU RoHS Declaration</a>
Toxic heavy metal free	Yes
Mercury free	Yes
RoHS exemption information	<a href="#">Yes</a>
China RoHS Regulation	<a href="#">China RoHS declaration</a> Pro-active China RoHS declaration (out of China RoHS legal scope)
Environmental Disclosure	<a href="#">Product Environmental Profile</a>

## Contractual warranty

Warranty	18 months
----------	-----------